



# INDOFINE Chemical Company, Inc.

121 Stryker Lane, Bldg. 30, Suite 1 • Hillsborough, NJ 08844 • U.S.A.

Phone: (908) 359-6778 • FAX: (908) 359-1179

website: [www.indofinechemical.com](http://www.indofinechemical.com)

e-mail: [chemical@indofinechemical.com](mailto:chemical@indofinechemical.com)

## CERTIFICATE OF ANALYSIS

Cat No.: 19-245

Product: 3(4'-BROMOPHENYL)-6-HYDROXY-4-METHYLCOUMARIN

Lot Number: 000231

Chemical Formula: C<sub>16</sub>H<sub>11</sub>BrO<sub>3</sub>

Molecular Weight: 331.17

Melting Point: 268-271°C

Appearance: Dark cream colored powder

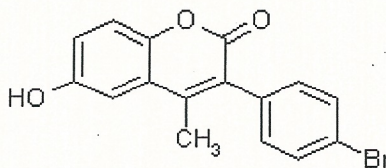
TLC: Hexane: Ethyl acetate (7:3)

Solubility: DMSO

NMR Spectrum: Enclosed

Storage: Cool dry place

Purity: (HPLC) 99.66%



19-245



# INDOFINE Chemical Company, Inc.

121 Stryker Lane, Bldg. 30, Suite 1 • Hillsborough, NJ 08844 • U.S.A.

Phone: (908) 359-6778 • FAX: (908) 359-1179

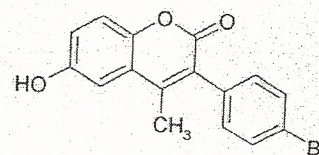
website: [www.indofinechemical.com](http://www.indofinechemical.com)

e-mail: [chemical@indofinechemical.com](mailto:chemical@indofinechemical.com)

## HPLC ANALYSIS

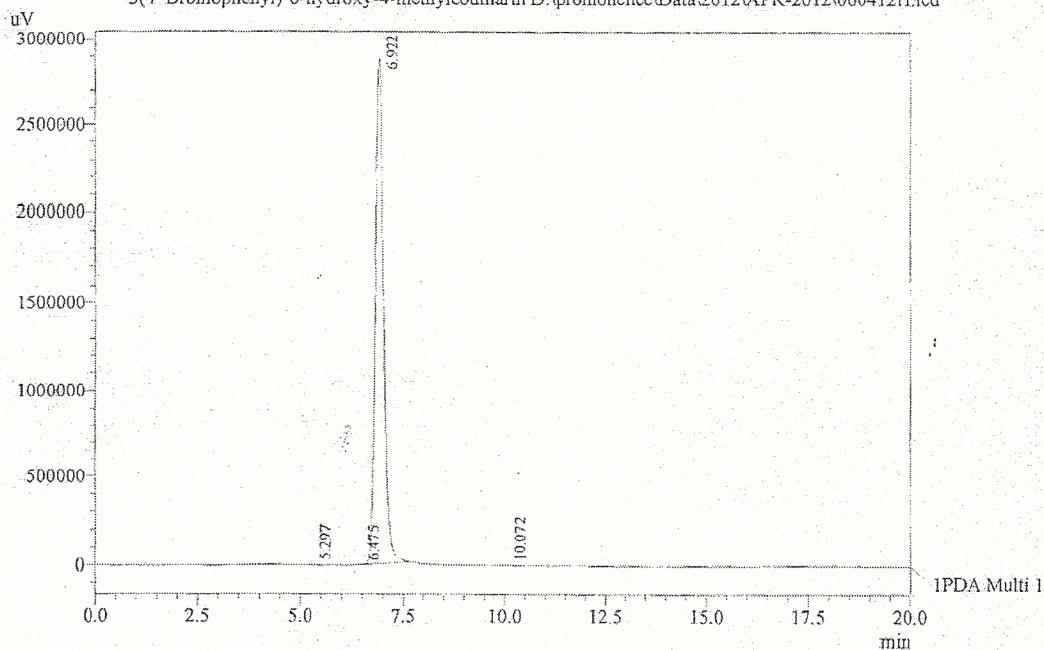
Catalog no.: 19-245  
Product name: 3(4'-Bromophenyl)-6-hydroxy-4-methylcoumarin  
Lot No.: 000231

Acquired by : Sanjeev  
Sample Name : 3(4'-Bromophenyl)-6-hydroxy-4-methylcoumarin  
Sample ID : Lot No:-000231  
Injection Volume : 20 uL  
Data Filename : 060412H.lcd  
Method Filename : Linear Isoocratic.M.lcm



Column : LUNA C-18(2), (250mm x4.6mm 5.0µ)  
Flow : 1.000 mL/min.  
Mobile Phase : A(20% of 0.05% TFA in water) B(80% of Methanol)

Chromatogram  
3(4'-Bromophenyl)-6-hydroxy-4-methylcoumarin D:\promonence\Data\2012\APR-2012\060412H.lcd



1 PDA Multi 1 / 230nm 4nm

PeakTable

PDA Ch1 230nm 4nm

| Peak# | Name      | Ret. Time | Area     | Area % | Relative Retention Time |
|-------|-----------|-----------|----------|--------|-------------------------|
| 1     | RT:5.297  | 5.297     | 77746    | 0.19   | 0.77                    |
| 2     | RT:6.475  | 6.475     | 12519    | 0.03   | 0.94                    |
| 3     | RT:6.922  | 6.922     | 39810641 | 99.66  | 1.00                    |
| 4     | RT:10.072 | 10.072    | 45457    | 0.11   | 1.46                    |
| Total |           |           | 39946363 | 100.00 |                         |



# INDOFINE Chemical Company, Inc.

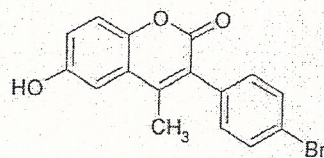
121 Stryker Lane, Bldg. 30, Suite 1 • Hillsborough, NJ 08844 • U.S.A.

Phone: (908) 359-6778 • FAX: (908) 359-1179

website: [www.indofinechemical.com](http://www.indofinechemical.com)

e-mail: [chemical@indofinechemical.com](mailto:chemical@indofinechemical.com)

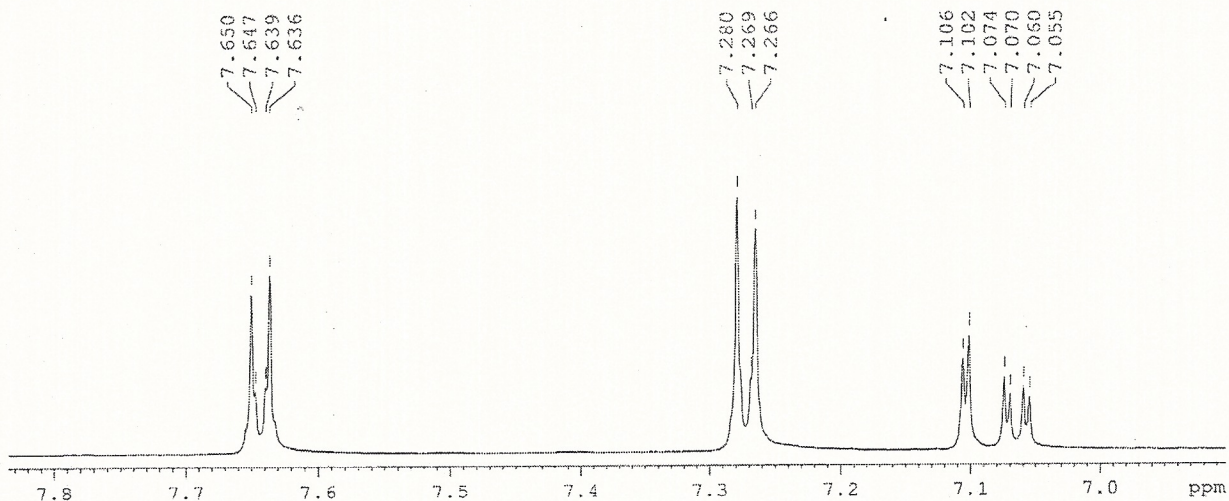
Catalog no.: 19-245  
Product name: 3-(4'-Bromophenyl)-6-hydroxy-4-methylcoumarin  
Lot No.: 000231



```
SOLVENT      DMSO
NS           12
DS           0
SMH         9578.544 Hz
PDRRES      0.319508 Hz
RG          1.5659456 sec
RS           296
PW          52.200 usec
DE           6.00 Usec
TE           298.2 K
D1          1.50000000 sec
TD0         1
```

ICC-APR-10  
1H IN DMSO  
AVANCE-600

```
***** CHANNEL F1 *****
NUC1        1H
P1           8.30 usec
PL1         -1.00 dB
PLLW        15.17893314 W
SFO1        600.3344343 MHz
SI           32756
SF          600.3300115 MHz
WDM         EM
SFE         0
LB           0.30 Hz
GB           0
PC           1.00
```





# INDOFINE Chemical Company, Inc.

121 Stryker Lane, Bldg. 30, Suite 1 • Hillsborough, NJ 08844 • U.S.A.

Phone: (908) 359-6778 • FAX: (908) 359-1179

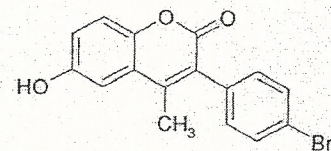
website: [www.indofinechemical.com](http://www.indofinechemical.com)

e-mail: [chemical@indofinechemical.com](mailto:chemical@indofinechemical.com)

Catalog no.: 19-245

Product name: 3(4'-Bromophenyl)-6-hydroxy-4-methylcoumarin

Lot No.: 000231



SOLVENT DMSO  
NS 12  
DS 0  
SMH 9578.544 Hz  
FIDRES 0.319306 Hz  
AQ 1.5658456 sec  
RG 256  
DW 52.000 usec  
DE 6.00 usec  
TE 298.2 K  
PL 1.5000000 sec  
TDO 1

ICC-APR-10  
1H IN DMSO  
AVANCE-600

\*\*\*\*\* CHANNEL f1 \*\*\*\*\*  
NUC1 1H  
P1 8.30 usec  
PL -1.00 dB  
PLW 15.17883114 M  
SFO1 600.3344343 MHz  
SI 32768  
SF 600.3300115 MHz  
WDW EM  
SSE 0  
LB 0.30 Hz  
GB 0  
PC 1.00

